

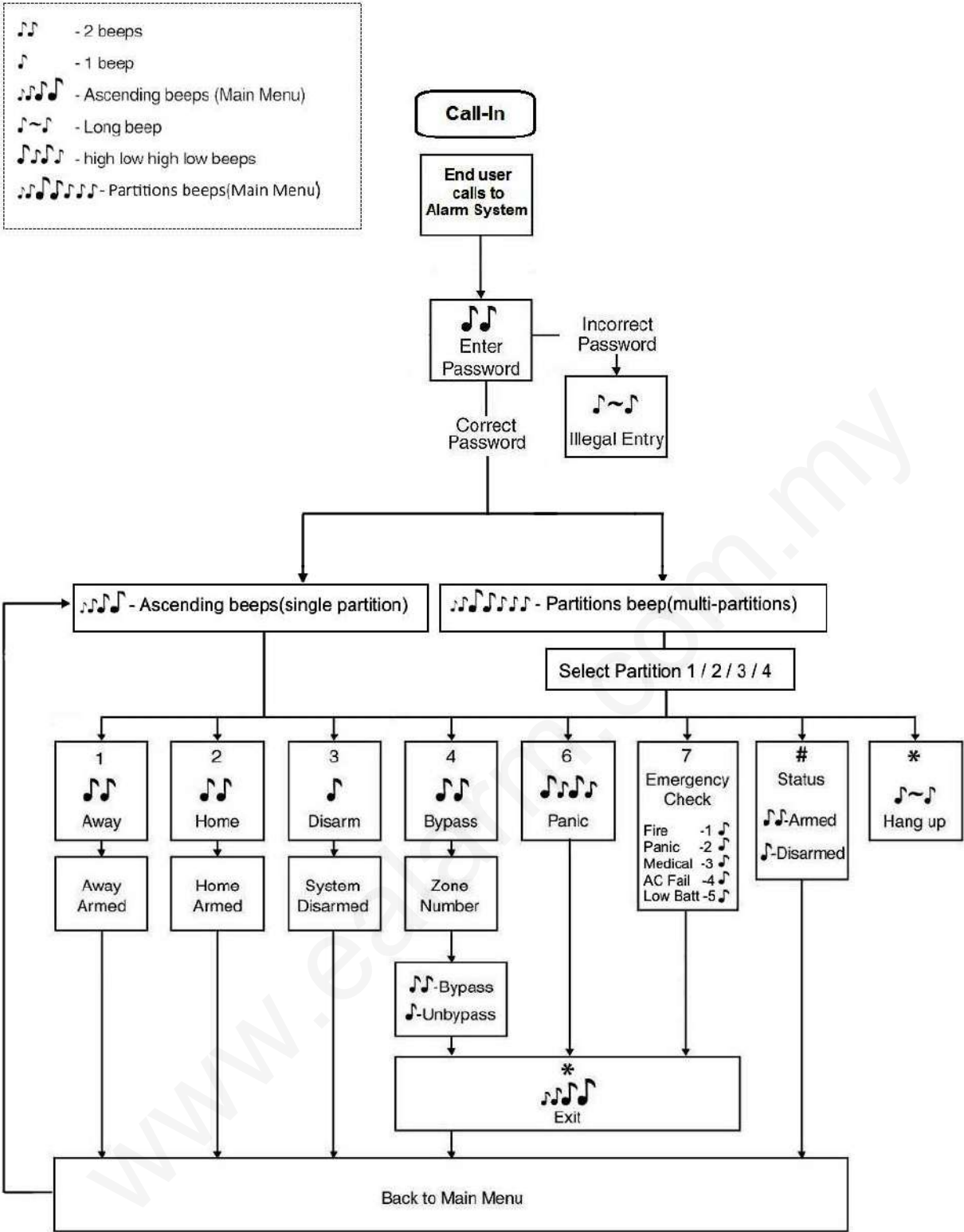
Quick Operation Reference

Away Arm	[ User Code ] [ 9 ] or [ User Code ] [ AWAY ]
Away Arm(multi-partitions)	[ User Code ] [ 9 or Away] + [select partition][ * ]
Home Arm	[ User Code ] [ 8 ] or [ User Code ] [ HOME ]
Away Arm(multi-partitions)	[ User Code ] [ 8 or Home] + [select partition][ * ]
Quick Away Arm	[ # ] [ AWAY ] or [ # ] [ 9 ] or hold [ AWAY ] 3s
Quick Home Arm	[ # ] [ HOME ] or [ # ] [ 8 ] or hold [ HOME ] 3s
Disarm	[ User Code ] [ 0 ]
Disarm(multi-partitions)	[ User Code ] [ 0 ] + [select partition][ * ]
Bypass	[ User Code ] [ 6 ] [ Zone Number ] [ * ]
Bypass	[ User Code ] [Bypass] [ Zone Number ] [ * ]
Review	[ User Code ] [ 4 ]or [ User Code ] [Review]
Walk-test	[ User Code ] [ 5 ]
Panic alarm	hold [ PANIC ] 3s or [ # ] [ 1 ]
Fire alarm	hold [ Fire ] 3s
Medical	hold [ Medical ] 3s
Duress alarm	[ User Code with Last Digit + 1 ]

Programming

Enter programming mode	[ Master Code ] [ 7 ] [ Address ] [ Value ] [ * ]
Change Master Code	[ Master Code ] [ 7 ] [ 0401] [ 4 Digits Code ] [ * ]
<i>*Address 0401 is Master user, Address 0403 to 0420 is for user 3 to 20 respectively</i>	
Program user Partition	[ Master Code ] [ 7 ] [ 0451] [ select partition ] [ * ]
<i>*Address 0451 is Master , Address 0453 to 0470is for user 3 to 20 respectively</i>	
Program system date(DDMMYY)	[ Master Code ] [ 7 ] [ 0501 ] [ 6 Digits Value ] [ * ]
Program system time (24-hour format.)	[ Master Code ] [ 7 ] [ 0502 ] [ 4 Digits Value ] [ * ]
Program Auto Daily Test(24-hour format.)	[ Master Code ] [ 7 ] [ 0503 ] [ 4 Digits Value ] [ * ]
Program Interval Time	[ Master Code ] [ 7 ] [ 0504] [ 4 Digits Value ] [ * ]

*\*set the interval waiting time to report CMS.If the interval time is not set then the test report will follow by auto daily test*



# Call-Out Block Diagram

